

Rev. Dr. Michelle Holley Carlson  
Co-Pastor

Rev. Dr. Rick Carlson  
Co-Pastor



OCTOBER 19/20, 2024  
TIME AFTER PENTECOST

## Lisa Reese Parish Preaching



Lisa has been a member of First Lutheran since 2005. She currently serves as Treasurer on the Church Council, is an Altar Guild, Communion Assistant and Lector.

Lisa and her husband, Donald have two grown children. Lisa has served as Executive Director of Kearney Public Schools Foundation since 2016.

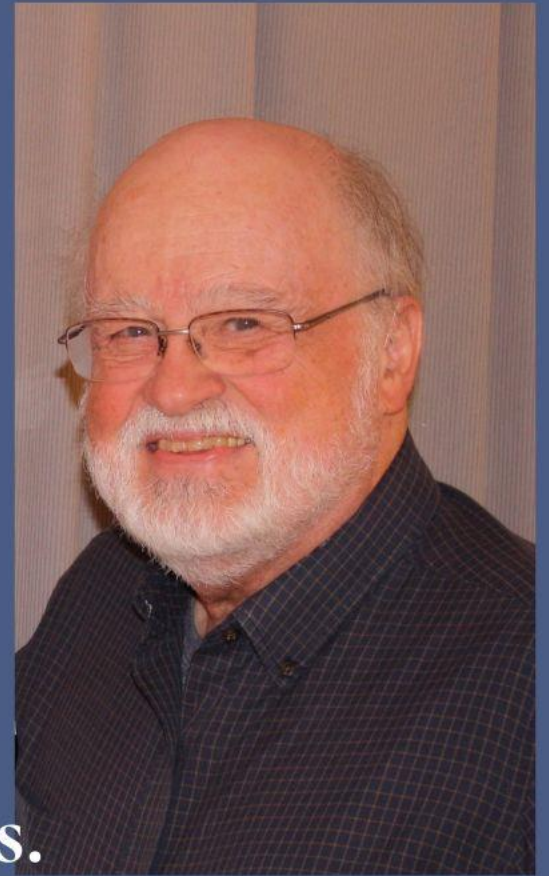
OCTOBER 19/20, 2024  
TIME AFTER PENTECOST

Rev. John Gosswein  
Pastor at Mosaic

Presiding

Pastor John has served in ministry for 30 years.  
He retired from full-time parish work in 2021, but  
continues to serve as a Pastor for Mosaic/Bethphage  
Village in Axtell.

He is also a volunteer at Habitat for Humanity.





**“Sharing Shelf”**  
**October S.A.F.E. Center Donation:**  
**Disposable plates, bowls, cups and**  
**silverware.**  
**Please set donated items on the shelf in**  
**the Narthex.**

The S.A.F.E. Center is the Spouse/Sexual Abuse Family Education Center. The S.A.F.E. Center’s mission is to provide free and confidential serves for those affected by dating violence, domestic violence, human trafficking, sexual assault, and stalking while bringing awareness and prevention efforts to all individuals across South Central Nebraska.

Sundays 8:45 am

# FLC RADIO BROADCAST

**This week's radio broadcast  
is sponsored by:  
David and Julie Bohm in memory of  
Henry Bohm, David's father.**

**Call or email the church office to  
sponsor a radio broadcast.**



*Kearney • Hastings • Grand Island*

[Espnsuperstation.com](http://Espnsuperstation.com)

# OPERATION SHINE



Operation Shine Camp gives children with autism experiences to do things they never thought possible. Conferences provide resources to families and others to help them in their autism journeys. The foundation provides support to children of all ages and their families dealing with autism, bullying, and other challenges faced by today's children. We seek to enrich the lives of the kids by locating and providing the resources that will help them reach their full potential in life.

# Brookestone Gardens

## Brookestone Garden Services

- **2:00 pm**
- **First Sunday of each month.**



TOGETHER  
FOR JOY



KEEP AN EYE OUT FOR DETAILS  
FROM THE FIRST LUTHERAN CHURCH  
STEWARDSHIP TEAM AS WE  
LAUNCH OUR "TOGETHER FOR JOY"  
ANNUAL GIVING CAMPAIGN.

THANK YOU FOR PRAYERFULLY  
CONSIDERING YOUR SUPPORT  
OF THE JOYFUL FUTURE OF FLC!



# SUNDAY SCHOOL MEETS

## 9:50 am - 10:50 am

PreK-5th Grade - Meet in North Hall  
Middle School / FLY- Meet in the  
Basement

***Check signage in halls for pick up locations.***

Please register your child.

**Registration Forms are on the  
Welcome Stations or online at:  
[firstlutherankearney.org](http://firstlutherankearney.org)**

**Bring a friend!**



**This week's altar  
flowers are  
provided by  
Kurt and Amy  
Behrhorst  
in honor of  
Laura's birthday.**



# Wednesday Night Activities



**Praiser Bells - 5:15pm - 5:45pm**

**Feeding the Flock - for all ages 5:30pm - 6:30pm**

**Heavenly Treble Makers - 6:15pm - 6:45pm**

**FROG 6:15pm - 7:45pm**

**FLY - 6:30pm - 8:00pm**

**Confirmation - at home assignment October 23.**

**Check signage in the hallways for room assignments.**



**FLY IS  
BACK!**

**Wednesdays**

**6:30 pm**

**Sundays**

**9:50 am**

**Check your emails for specific  
dates and locations.**



**Reminder to all  
FLY members:  
October 23rd  
FLY will have S'mores and  
Pumpkin Carvings!**



**Check your  
emails for  
times and  
locations!**



# **New Church Directory Picture time!**



**Send your family photos to  
Jen at: [jpuls@region3.net](mailto:jpuls@region3.net)  
Photos MUST be current within one year.**

**Photos must be sent in BY December 1<sup>st</sup>!**

**If you don't have a current photo, The Witness  
& Members Team will be set up to take photos  
October 26, 27, November 2, 3, 9 & 10.**

# **REFORMATION SUNDAY**

## **October 27th**

- **9:50 am - Sunday School**
- **11:00 am - Unity Service | Traditional**  
**(no 8:45 am service)**
- **12:00 noon - Potluck Luncheon**
  - **Members w/last names A-L, please bring a salad, side, or dessert.**
  - **Members w/last names M-Z, please bring a main dish**
- **12:45 pm - 2:15 pm - Trunk or Treat**

LET YOUR LIGHT SHINE

TRUNK  
OR  
TREAT



SUNDAY,  
OCTOBER 27TH

12:45 - 2:15 PM  
SOUTH PARKING LOT

SUNDAY SCHOOL 9:50AM  
CHURCH SERVICE 11:00AM  
CHURCH LUNCH 12:00PM  
TRUNK-OR-TREAT 12:45PM



# All Saints' Day

**In remembrance of your loved ones who have died, you're welcome to bring a photo to be displayed during All Saints Weekend.  
(November 2/3)**



***Tables will be set up in the Narthex beginning October 23rd.***

Write a special blessing on the “new church office” floor as we dedicate the new area.

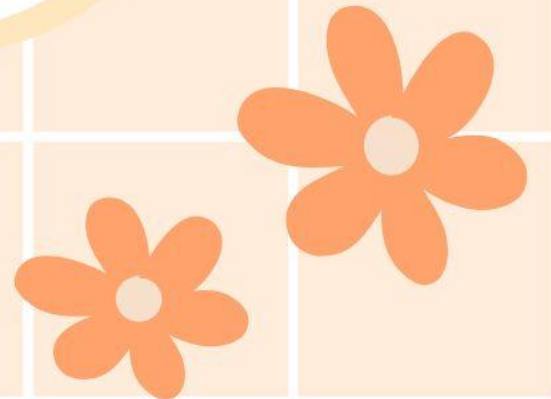
- Saturday, November 2nd, before or after service
- Sunday, November 3rd, before or after service.



Thank you to all of the Special Judges, Stan Clouse,  
Sandy Erpelding and Dave Zimmer  
for being a part of the "head table".  
Also, a special thank you to all of the  
chili and cinnamon roll participants.

Your food was all incredible!

Finally, thank you to everyone who came out and  
supported FLY we raised \$809.





# Contest Winners!



## Chili



**1st Darveau family**  
**2nd Brad Stolcpart**  
**3rd Josh Sikes**



## Cinnamon Roll



**1st Becky Bredenkamp**  
**2nd Denton family**  
**3rd Janet Schmitz**

# **October's Volunteer of the Month is Jan Wilson**



**Congratulations, Jan!  
Thank you for all of your  
time and hard work!**

**Jan has been a member of First Lutheran for over FIFTY years. She faithfully covers the office weekly during staff meetings, along with multiple other weekly tasks. THANK YOU!**



# Nielsen Kids U-Pick Pumpkin & Sweetcorn Patch

First Lutheran Church  
& Preschool would like  
to send a huge Thank  
You to Nielsen Pumpkin  
patch in Minden for  
donating 40 pumpkins!  
These will be displayed  
at the church entrances  
and given to the  
Preschool kiddos!

# The first phase of “NEW HVAC”!!!

Out with the old!



In with the new!



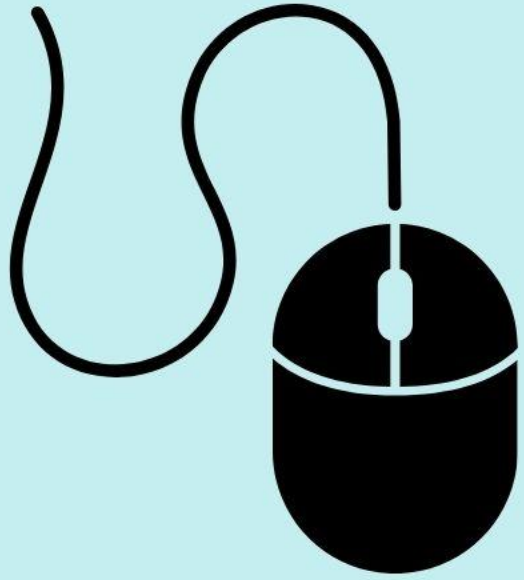
# Time Change!

Beginning Sunday,  
November 3rd at  
2:00am begins  
Daylight Saving Time.  
“Fall Back” one hour.





# **MEDIA BOOTH VOLUNTEERS**



**If you can click a computer mouse,  
then you qualify and are trainable!**

**Sound, projection and video  
volunteers are needed during our**

**Saturday and Sunday Worship Services.**

**If you're interested, please call the church office**

**308-237-5544**

**or email [office@firstlutheran Kearney.org](mailto:office@firstlutheran Kearney.org).**

# Baby Care Kits

- 2 receiving blanket
- 2 pairs of socks
- 4 cloth diapers
- 2 cotton t-shirts (no onesies)
- 1 jacket or sweater (or hooded sweatshirt)
- 1 long or short sleeve gown or sleeper
- 2 or 3 bath size bars of gentle soap
- 2 diaper pins or large safety pins
- 1 hand towel (dark color)

Donation box in Cafe Area - contact  
Deb Schauer for more details. 233-2669



Lutheran World Relief

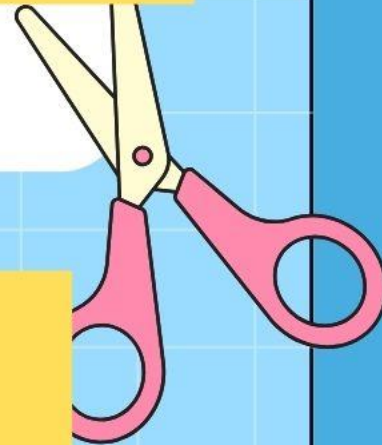
## School Kits

70 sheet notebook (wide or college ruled)  
16 or 24 box of crayons



**Thanks to a donor - ALL items needed  
for school kits have been fulfilled!!**

2 1/2" long pink eraser



**Drop items off in Cafe Area**

# Personal Care Kits




Lutheran World Relief

- Each kit needs to include the following:
- One light weight bath size towel in a dark color
- Two or three bath size bars of soap
- One adult-size toothbrush
- One sturdy comb
- One metal nail clipper



All items must be new and left in the collection baskets in the cafe.

Call Deb Schauer for more information. (308) 233-2669



# PRESCHOOL REGISTRATION OPEN TO THE PUBLIC

- Easy sign up and registration process! Reasonable rates, follow KPS public school schedule closely, secure facility.
- <https://firstlutheran Kearney.org/first-lutheran-preschool/>

## Volunteers are needed for the “Caring and Sharing Group”.



**Sign up for our  
Caring and  
Sharing Group!  
More details in  
Narthex on  
bulletin board**

This ministry will provide a meal to members who have been in the hospital, had a new baby, lost a loved one, etc., which is based on John 13:34 NLT – “So now I am giving you a new commandment: LOVE EACH OTHER, just as I have loved you, you should love each other.”

Volunteers are needed to provide these meals. Please sign up in the Narthex.

# *WE ARE CALLED TO SERVE*

*Get involved | Volunteer | Ministry Opportunities*



**Please fill out the  
“Called to Serve” forms  
located in the pews.**

**Fold & put in the offering plate**

# Yellow Prayer Cards

- Prayer cards are available in the pew racks for you to include petitions during the Prayers of Intercession.

Ushers will collect the cards during the Prelude.





# NAME TAGS

Please wear your name tags so we can learn each others' names.



Need a name tag? Handwrite a nametag and hang it on the tree. Next week a printed nametag will be in that same spot for you.

# MISSION OUTREACH IS LOOKING FOR TEAM MEMBERS

Provides opportunities by encouraging members to reach out and spread God's love locally and globally. Help fulfill Jesus's command to love, serve, and care for our brothers and sisters.

Contact the office for more details.



# Capital Campaign for Improved Offices & HVAC



## GROW WITH US!

**The T-coil can be heard best in  
the two center aisles on the main level.**

**For the hard of hearing,  
FIRST LUTHERAN CHURCH  
offers a loop system.  
Hearing aid wearers with  
a “T” (telecoil) setting  
can now hear the service  
broadcast directly through  
their hearing aids.**



**For those who do NOT have a T-coil in their hearing aid  
or no hearing aid, contact an Usher for the use of a  
RX-20 Hearing Loop Receiver for use during the service.**



## **FRIENDLY REMINDER:**

**To maintain membership status at First Lutheran, please register receiving Holy Communion at least once a year.**

Registration cards are in the pew racks and on the Welcome Stations.

# Welcome Visitors

We invite you to complete a Visitor Card. Please place it in the offering plate or in one of the boxes on the Welcome Stations.





# Worship Times

<b>Saturday (Traditional)</b>	<b>6:00 pm</b>
<b>Sunday (Traditional)</b>	<b>8:45 am</b>
<b>Sunday (Contemporary)</b>	<b>11:00 am</b>

# Support those impacted by Hurricane Helene through Lutheran Disaster Response:

<https://give.elca.org/page/68904/donate/1>





ELECTRONIC GIVING OPTIONS

**VANCO**

FAITH

**ON-LINE**

visit FLC's  
website

**MOBILE**

**APP**

iPhone & Android

**VANCO MOBILE IS SIMPLE AND SECURE.  
TRY IT TODAY!**



**FIRST LUTHERAN**  
Church of Kearney