

Rev. Dr. Michelle Holley Carlson  
Co-Pastor

Rev. Dr. Rick Carlson  
Co-Pastor



Sundays 8:45 am

# FLC RADIO BROADCAST

This week's radio broadcast  
is sponsored by:  
**First Lutheran Church**

Call or email the church office to  
sponsor a radio broadcast.



*Kearney • Hastings • Grand Island*  
[Espnsuperstation.com](http://Espnsuperstation.com)





**“Sharing Shelf”**  
**S.A.F.E. Center Donations for May:**  
**disposable plates, cups, and silverware.**



**Please set donated items on the shelf in the Narthex.**

The S.A.F.E. Center is the Spouse/Sexual Abuse Family Education Center.  
The S.A.F.E. Center’s mission is to provide free and confidential services for those affected by dating violence, domestic violence, human trafficking, sexual assault, and stalking while bringing awareness and prevention efforts to all individuals across South Central Nebraska.

**The T-coil can be heard best in  
the two center aisles on the main level.**

**For the hard of hearing,  
FIRST LUTHERAN CHURCH  
offers a loop system.  
Hearing aid wearers with  
a "T" (telecoil) setting  
can now hear the service  
broadcast directly through  
their hearing aids.**



**For those who do NOT have a T-coil in their hearing aid  
or no hearing aid, contact an Usher for the use of a  
RX-20 Hearing Loop Receiver for use during the service.**





Altar flowers are  
provided by Jen Puls  
in celebration of  
Nathan and Kenna's  
wedding.  
Congratulations!





# MEMORIAL DAY

HONORING ALL WHO SERVED



**THE CHURCH OFFICE IS CLOSED ON  
MONDAY, MAY 26TH IN HONOR OF  
MEMORIAL DAY**





**Are you a landscaper  
or know one?**

**Grass or sod needs planted on the  
north west side of the church by  
the new sidewalk.**

**If you can help with this, please call the church  
and ask for Kathy. (308)237-5544**

# Preschool Kitchen Shower

Help **us** stock our **NEW Preschool Kitchen!**

List of items needed:

Microwave, refrigerator, desk chair, step ladder, Visa Gift Cards (*for cookware, plates, measuring cups, etc.*)

Details can be found on the board in the Narthex.







# **Volunteer of the Month: Adam Wegner**

**Adam has been a member of First Lutheran since November 2016. He is the chair of the Imaging and Technology Team and volunteers countless hours covering our needs.**

## **Adam helps with the following and more:**

- Organizes coverage for the Sound Booth**
- Volunteers as First Lutheran's I.T. Person**
- Manages the Hearing Loop**
- Covers Audio/Visual needs for Weekly Services and Special Events**
- Manages Livestream on Facebook, our Website and TVs**

**Thank you, Adam! We appreciate you!**



**Sometimes the whole family helps!**

**OPERATION  
SHINE**



**The children's weekly "Noisy Offering" donations go towards "Operation Shine".**

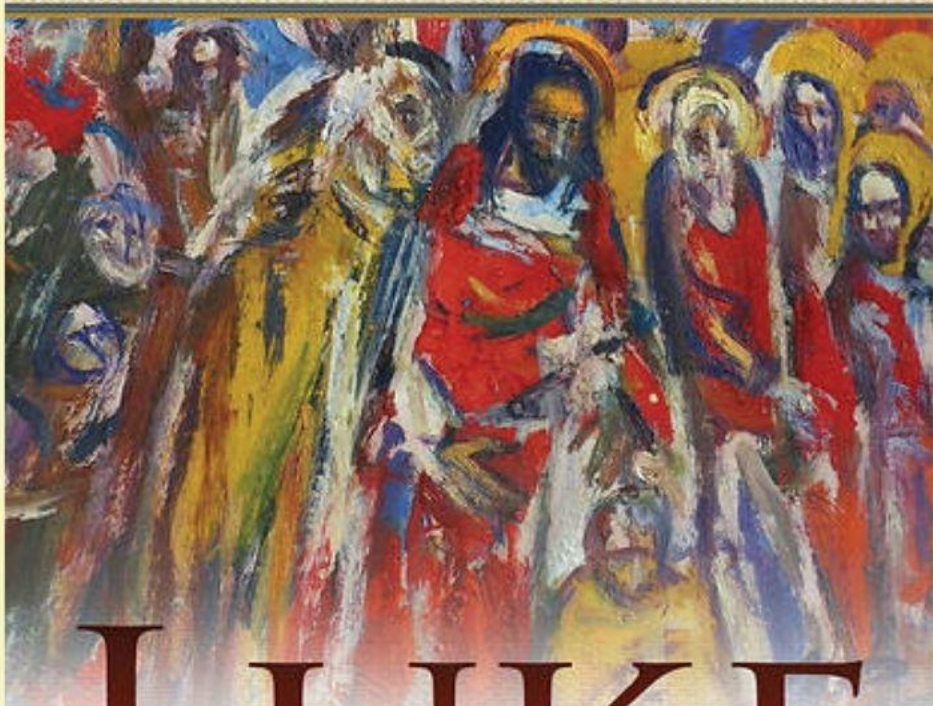
**Operation Shine Weekend Camps are three-day camps for children ages 7-12 experiencing Autism Spectrum Disorders and related conditions.**

**Donation boxes are also on the Welcome Stations.**



ADAM HAMILTON

*Author of John, The Walk, and 24 Hours That Changed the World*



# LUKE

JESUS AND THE  
OUTSIDERS, OUTCASTS,  
AND OUTLAWS

## Please join us for an Adult Bible Study!

- Every Wednesday Morning  
through June 25th
- 10:30 am - 12noon
- Fellowship Hall

The link to order the book is on  
the FLC website and in the  
weekly newsletter.

# **SUMMER**

## **WORSHIP SCHEDULE**

**11:00 AM HAS CHANGED TO 10:30 AM**





# Playdate In The Park

**31**  
May

**10**  
AM

Sponsored by:  
Pastor Logan and  
Erin Ellis

**FAMILY FUN | PLAYGROUND | SPLASH PAD**

Parents of Elementary Aged Kids:  
Bring your kids, for a playdate in the park and potential  
splashpad fun!

Dryden Park – 601 E 31<sup>st</sup> Street, Kearney



**308-655-1720**

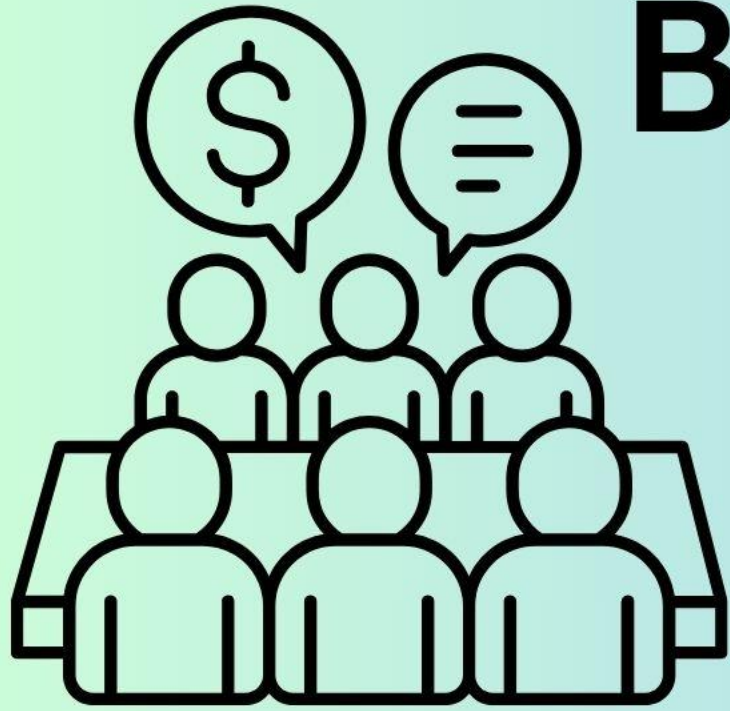


# Hymns of Faith, Pentecost Party

An opportunity to learn about the hymns we sing will be offered on June 8<sup>th</sup> between services in the Sanctuary.

If you come to the early service, stay and learn about the background and hear the stories of some of our hymns. If you usually come to the late service come early and join the party.





# Budget Forum

- Sunday, June 15
- 9:45 am
- Centennial Hall

**Please attend the budget forum.  
The 2025/2026 financial plan will be  
discussed and congregational  
input is needed!**

# Annual Meeting

- **Sunday, June 29**
- **9:45 am**
- **Centennial Hall**

WE NEED ALL CHURCH MEMBERS TO ATTEND. WE WILL VOTE ON ELECTED OFFICIALS, VOTE ON THE BUDGET AND CELEBRATE THE CONGREGATION'S ACTIVITIES.





# VACATION BIBLE SCHOOL



## JULY 14 – 17 & 20

**WEEKDAYS 6:00pm – 8:00pm**

Check-In & Free-Will Donation Meal 5:15-5:50pm

**SUNDAY, JULY 20:**

**10:30am WORSHIP SERVICE**

VBS Takeover: 5th Lesson, Perform Songs, Party After



**REGISTER**



**VOLUNTEER**

**You can bid on this beautiful quilt!**  
**Details on the Carol Joy Holling**  
**Website: [www.CJHCenter.org](http://www.CJHCenter.org)**



**Auction will be:**  
**Saturday, July 26, 2025**  
**Please Check**  
**Carol Joy Holling's**  
**website for updates.**

Quilt donated by: Judy Niemann



**Thank you  
Elyria Gardens  
for donating and  
planting the  
beautiful  
outdoor flowers!**



# **Our New Nursery is Open!**

**Do you need a quiet space to go  
with your child?**

**Feel free to use the nursery.  
The service is live streamed inside.**





Wednesday evening childcare available.

Volunteer opportunity:  
**FROG COORDINATOR**

for the 2025-26 school year

Be a part of our fun Wednesday evening kid's programming!

**Main duties include:**

- ✓ Find volunteers to be teachers
- ✓ Create a schedule for the upcoming year
- ✓ Be the contact person throughout the year for teachers and congregation

**Curriculum & materials provided!**

**COLLABORATE WITH A FRIEND  
TO BE CO-COORDINATORS!**

**F.R.O.G.**



**FULLY RELY  
ON GOD**

Contact the office if interested or with any questions: [volunteers@firstlutherankearney.org](mailto:volunteers@firstlutherankearney.org)

# **2025 - 2026**

## **First Lutheran Church Preschool**

### **Registration**

**3-year-old**  
**8:15 - 11:45am**  
**Monday -**  
**Thursday**

**\$250**  
**per month**

**PreK**  
**8:15 - 3:00pm**  
**Monday -**  
**Friday**  
**\$625 per**  
**month**  
**\*2 snacks and**  
**lunch included**

**\$60.00**  
**non-**  
**refundable**  
**registration**  
**fee**

**<https://firstlutheran-kearney.org/first-lutheran-preschool/>**

**Call the church**  
**office with any**  
**questions**  
**(308) 237-5544**



# Yellow Prayer Cards

- Prayer cards are available in the pew racks for you to include petitions during the Prayers of Intercession.

Ushers will collect the cards during the Prelude.



## **Reminder**

**Register your attendance at communion**

Registration cards in the pew racks  
and on the Welcome Stations

Registration is only required once a year.





# **Worship Times**

<b>Saturday (Traditional)</b>	<b>6:00 pm</b>
<b>Sunday (Traditional)</b>	<b>8:45 am</b>
<b>Sunday (Contemporary)</b>	<b>10:30 am</b>



# Welcome Visitors

We invite you to complete a Visitor Card. Please place it in the offering plate or in one of the boxes on the Welcome Stations.





ELECTRONIC GIVING OPTIONS

**VANCO**

FAITH

**ON-LINE**

visit FLC's  
website

**MOBILE**

**APP**

iPhone & Android

**VANCO MOBILE** IS SIMPLE AND SECURE.  
TRY IT TODAY!



**FIRST LUTHERAN**  
Church of Kearney