



## May 2025 / NEWSLETTER

**All the Women of our Congregation are Members of the First Lutheran  
Congregational Unit of the Women of the ELCA**

Check the Women's bulletin board of additional information

### Spring Luncheon - April 26, 2025



Betty Heggemeyer welcomed the women of First Lutheran Church and their guests to the Women's Annual Spring Luncheon.



Salads were provided by the women of the church. Everyone enjoyed a light meal and great Fellowship.



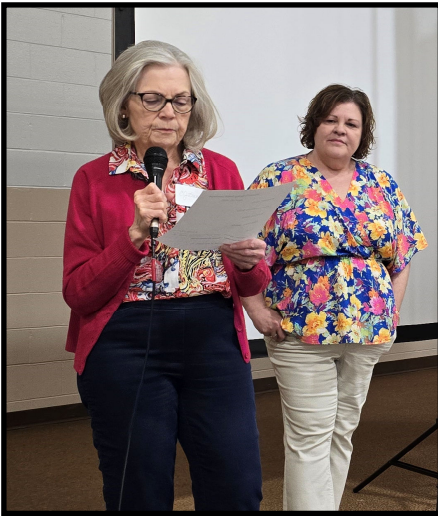
Tables were decorated with a center piece of flowers adorned with quilting notions by Judy Workman of the Gloria Circle, with the help of other Circle women. With Spring placemats, napkins and nut cups



## Program

### Guest Presenter - Sandi Griepenstroh

---



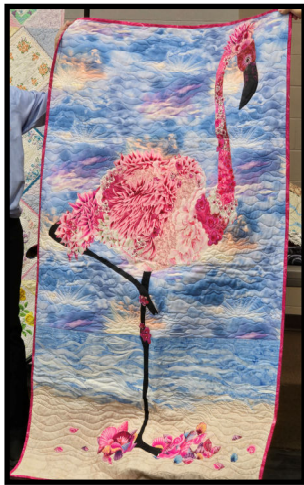
CJ Sabah introduced our Guest speaker, Sandi Griepenstroh.

Sandi started her long arm quilting business Lone Tree Designs Quilting (LTD Quilting) in the fall of 2009 and has quilted well over 2000 quilts using her hand-guided Nolting 24.

She enjoys writing a blog on her website: [ltdquilting.com](http://ltdquilting.com). Sandi manages a Facebook page called Sewing with Sandi with over 1000 followers, and also has a business page LTD Quilting.

She is member of several quilting guilds. She quilts for customers, presents trunk shows, teaches classes. Some of you may be familiar with the Quilters Cottage which belonged to her mother, down town on the bricks.

Sandi shared a variety of quilt styles and sizes.



Sandi answered questions from the ladies and shared many tips on how she made her quilts.



## Bring a favorite Quilt to share with everyone!

Women of First and their quests were encouraged to bring quilts to share. We have many talented quilters in our church. These quilts were on display with a little fact sheet sharing who the quilt belonged to, who made it, and a little story about the quilt.





## NEEDED

### **Hospitality Coordinator**

We are looking for someone to serve as the Hospitality Coordinator. We need to have someone start this ministry on June 1st. The Hospitality Coordinator sends cards to members of the congregation.



Information is available by contacting the church office or one of the Women's Board Officers.

Cards are sent to people who are/were hospitalized and sympathy cards to members who have lost loved ones. Those listed in the newsletter regardless of whether their funeral will be at FLC.

Birthday cards are sent when a special birthday is listed in the newsletter (e.g., 90 or 100), or Anniversary cards when a special anniversary is listed in the newsletter (e.g., 50, 60, or 75), or for Congratulations to parents for a Birth when these are reported in the newsletter. Information about who to send cards to in the weekly newsletter. A personalized message is written in each card.

The Church office provides cards, stamps, membership lists with mailing addresses and return address for First Lutheran Church.

### **First Lutheran Women's Events Calendar**

#### **2025**

- May 3**      **Southern Prairie Spring Gathering** at Church of the Good Shepherd in Hastings. The theme for Spring Gathering is "*Loved Beyond Measure*"
- June 2**      **Board Meeting** 7pm, in Centennial Hall
- July 7**      **Election of Officers / girls night event**
- Sep 26-28** **NSWO Biennial Convention:** Camp Carol Joy Holling

### **The Nebraska Synodical Women's Events Calendar**

- May 3**      **Southern Prairie Spring Gathering** at Church of the Good Shepherd in Hastings. The theme for Spring Gathering is "*Loved Beyond Measure*"
- Aug 1-3**      **Saved to Serve, "Mosaic"** at Beatrice. Spending time with the residents.
- Sep 26-28** **Biennial NSWO Convention** at Camp Carol Joy Holling near Ashland. The Theme is "*Wrapped in God's Love*".
- All women can attend these planned events, as they are open to everyone.**



## **First Lutheran's Women's Circle Groups**

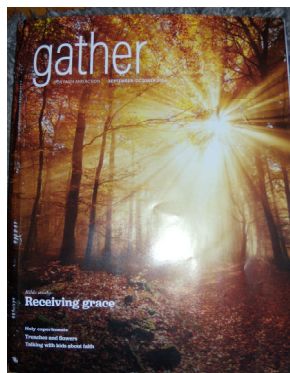
### **Deborah Circle**

5:00 pm - 3rd Monday

Co-chairs: Deb Schauer

308-233-2669

Deborah Circle is currently using the bible study from the Gather Magazine



### **Gloria Circle**

12:00 pm - 3rd Thursday

Chair: Judy Workman

Gloria and Naomi Circles

are currently using the

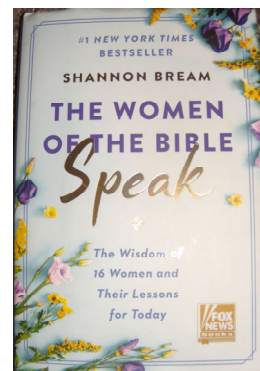
Bible study from the

"The Women of the Bible Speak"

### **Naomi Circle**

7:00 pm - 4th Thursday

Chair: Judy Niemann



The Nebraska Women of the ELCA has Seven Conferences.

1. Central
2. High Plains
3. Metro East
4. Midlands
5. Northeast
6. Southeast
7. Southern Prairie

First Lutheran in Kearney is in the Southern Prairie Conference

### **Women of the ELCA Officers of the First Lutheran Congregational Unit of Women of the ELCA**

#### **President:**

Linda Fowler 308-236-7265

#### **President Elect:**

Betty Heggemeyer 308-293-1167

#### **Secretary:**

Bev Vacha 308-468-6239

#### **Treasurer:**

Jo Smallcomb 308-234-3053

**Circle Groups:** Facilitate Bibles Studies and Host Church Women's Programs

**Work Groups:** Prepare and Serve Funerals and Other Events as needed

**Quilting:** Makes Quilts for LWR and School bags

**Prayer Shawl Ministry:** Knitted or Crocheted Shawls for those in need of comfort and prayers

**Cards:** Sent to Church Members

**Fellowship and Outreach:** to New Members

We are always looking for Women to participate in our Church Women's Events by: decorating, fixing food, helping to coordinate programs and of course attending events for the fellowship. You do not have to be a circle member to participate in all the activities.

**Our Church Women's Events** are the Christmas Brunch, Spring Event and the July night out.

**Our State Women's Events** are the Autumn Renewal, Winter Retreat, Spring Gathering and the NSWO Biennial Convention

**National Women's Event** is the Triennial Gathering. Coming July 16-19, 2026 in Des Moines, IA